



Deployable Resource Integration



"Building sustainable capabilities across all phases of Emergency Management in Kansas through selfless service"



Deployable Resource & SalamanderLive Process

For resource information to flow from SalamanderLive to Deployable Resource the following steps must be completed in the database.

The resource must:

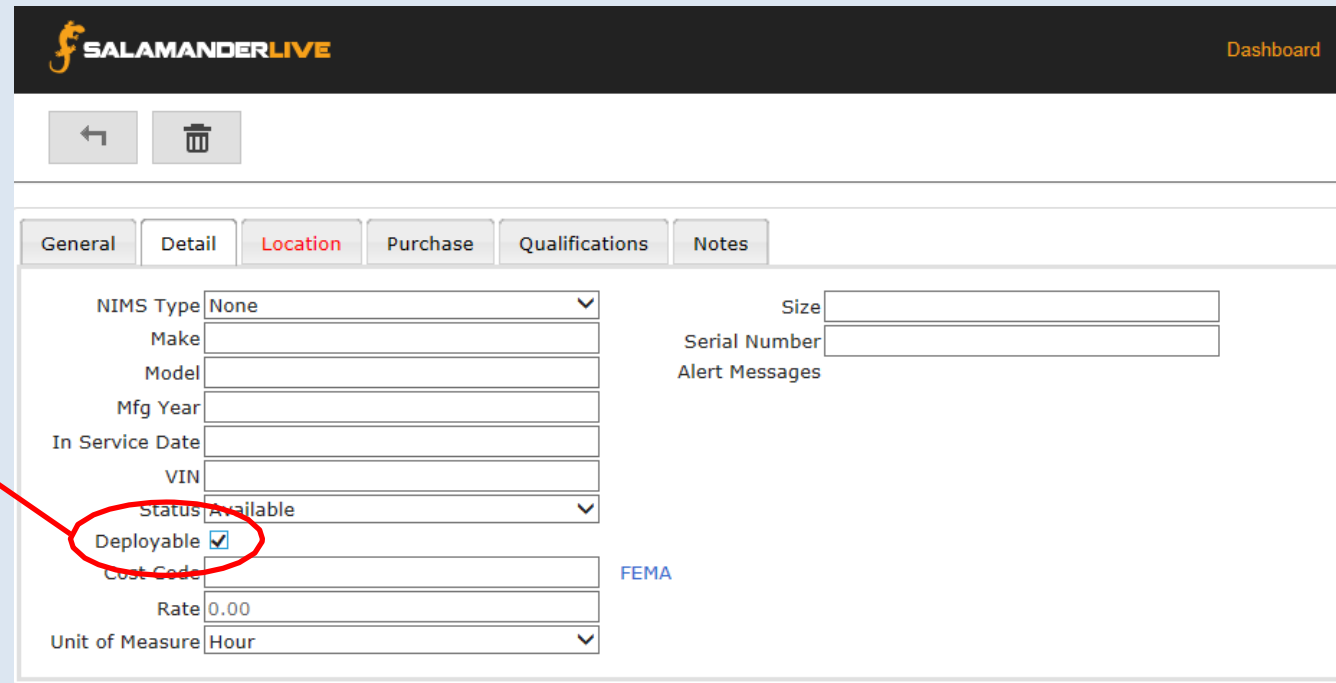
1. Have the deployable button checked
2. Have location information (address and contact info)
3. Have a Federal or State qualification assigned (*only assign one qualification to equipment*)



"Building sustainable capabilities across all phases of Emergency Management in Kansas through selfless service"

Deployable Resource & SalamanderLive Process

Deployable
Checkbox must be
selected



The screenshot shows the SalamanderLive web application interface. At the top is a black header with the SalamanderLive logo and a 'Dashboard' link. Below the header is a navigation bar with tabs: General, Detail, Location (highlighted in red), Purchase, Qualifications, and Notes. The main content area displays a form for a resource entry. The 'Status' dropdown is set to 'Available'. The 'Deployable' checkbox is checked and circled in red, with a red arrow pointing from the text 'Deployable Checkbox must be selected'. Other fields include NIMS Type (None), Make, Model, Mfg Year, In Service Date, VIN, Size, Serial Number, Alert Messages, Cost Code, Rate (0.00), and Unit of Measure (Hour). A 'FEMA' link is visible on the right side of the form.



Deployable Resource & SalamanderLive Process



The map will search in this
priority for location:

1. Longitude & Latitude
2. Address
3. City Centroid

Contact information needs
to be included.

A screenshot of the SalamanderLive web interface. The interface has a black header with the "SALAMANDERLIVE" logo. Below the header is a navigation bar with tabs: General, Detail, Location, Purchase, Qualifications, and Notes. The "General" tab is selected. The form contains several input fields: "GPS Location" (with a placeholder "Enter address to auto-complete form"), "Address Line 1", "Address Line 2", "City", "Country" (set to "United States"), "State" (set to "Kansas"), "Postal Code", "Longitude", and "Latitude". To the right of these fields are two contact information sections, each with "First Name", "Last Name", and "Phone" fields. A red box highlights the "General" tab and the "GPS Location" field. A red line points from the "priority for location" text to the "GPS Location" field. Another red line points from the "Contact information needs to be included" text to the contact information fields.

"Building sustainable capabilities across all phases of Emergency Management in Kansas through selfless service"

Deployable Resource & SalamanderLive Process

Resources Must have a Federal or State qualification assigned.

KANSAS

Click State and a new page will open with ESF folders

SALAMANDERLIVE Dashboard

General Detail Location Purchase Qualifications Notes

Disciplines > State > (ESF # 4) KS Firefighting > Equipment ESF #4

- Air Bag, Lifting, High-Pressure Set [ARBGLFTHP]
- Air Bag, Lifting, Low-Pressure Set [ARBGLFTLP]
- All Terrain Vehicle (ATV), Fire [ATVFIRE]
- Mobile Breathing Air Cascade Unit (4500 psi) [MBLBRTCSKD]
- Mobile Breathing Air Compressor Unit (2261 psi) [MBLBRTCMR]
- Trailer, Fire, Foam Tender [TRLRFMTNDR]
- Trailer, Hose [TLRHOSE]
- Trailer, Mobile EOC [TRLRMOBEOC]
- Truck, Air Supply [TRKASUP]
- Truck, Airport Firefighting (ARFF) [TRKARFF]
- Truck, Brush Patrol, Firefighting [TRKBSHPTFR]
- Truck, Engine, Fire (Pumper) [ENGFRPUMP]
- Truck, Quint, Fire [TRKQNTFIRE]
- Vehicle, Emergency Management Support [VHCLEMCMT]
- Vehicle, Fire Support [SPPTVHCLE]
- Water Tank, Portable [PORTWTRTNK]

Quick Add

Description Code Encode

Click any of the Federal ESFs and they will open folders of qualifications

Only assign one qualification that best matches equipment capabilities.

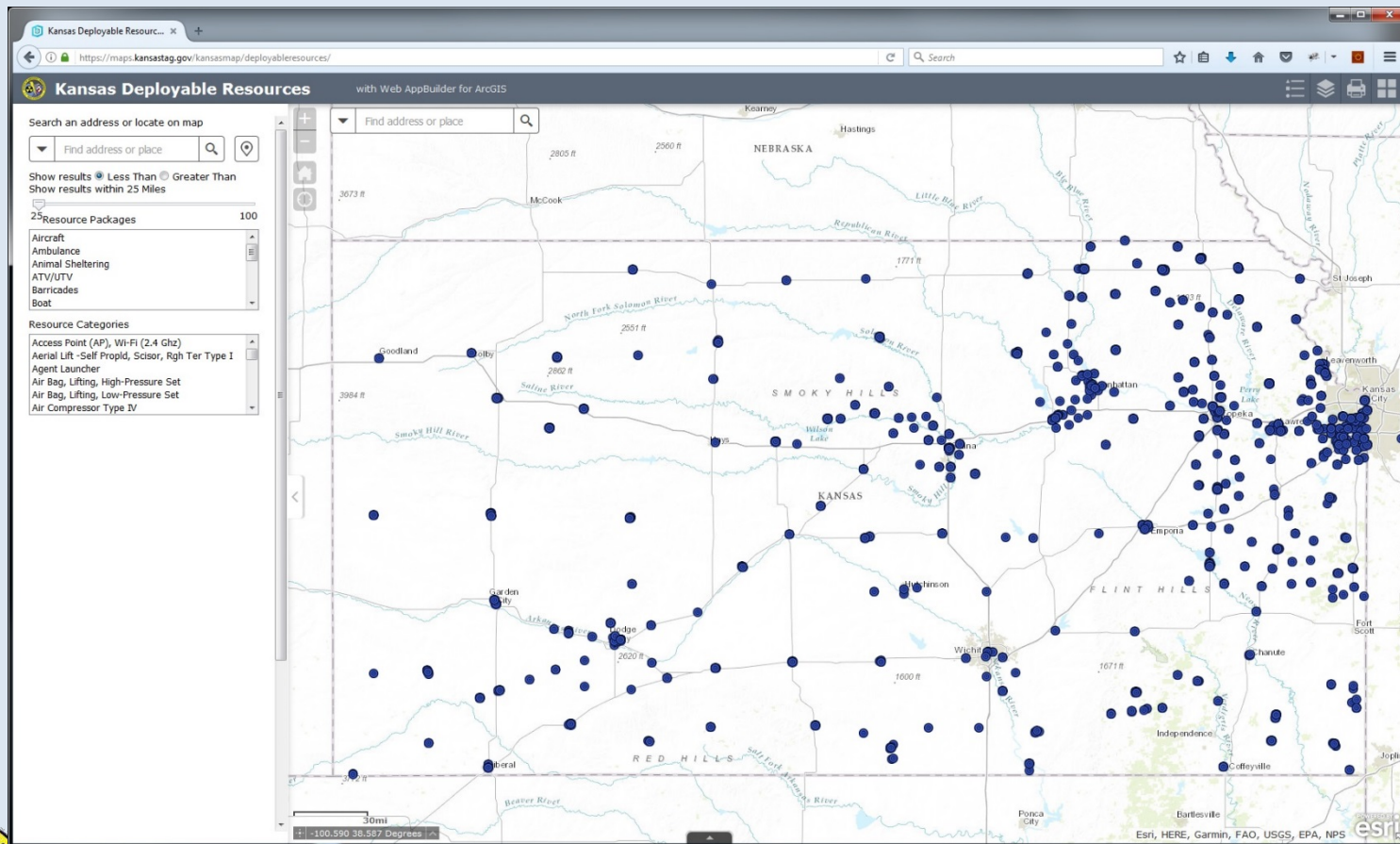


"Building sustainable capabilities across all phases of Emergency Management in Kansas through selfless service"



Deployable Resource

The Deployable Resource : DeployableResources application can be used to identify and locate deployable resources statewide using State and Federal typing.



"Building sustainable capabilities across all phases of Emergency Management in Kansas through selfless service"

Deployable Resource : Deployable Resources URL

Deployable Resources has a new, different URL from the previous version of it is:

<https://kdem.kansasgis.org/Kansasmap/deployableresources/>

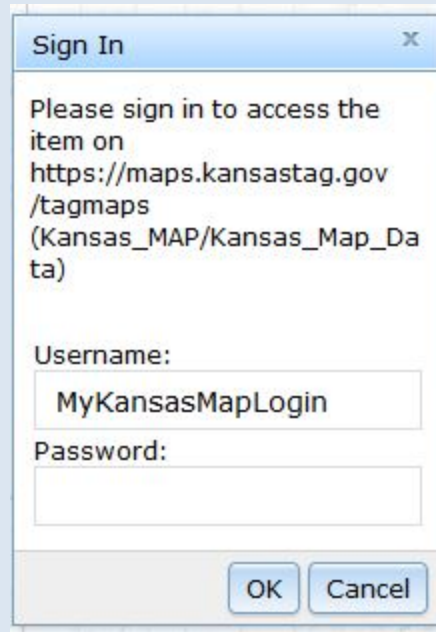


"Building sustainable capabilities across all phases of Emergency Management in Kansas through selfless service"

Login

Use your existing Deployable Resource login to log in to the new version or to request a login contact: Mike D'Attilio

michael.g.dattilio.nfg@mail.mil or Luke Finley luke.r.finley.nfg@mail.mil



Sign In

Please sign in to access the item on
<https://maps.kansastag.gov/tagmaps>
(Kansas_MAP/Kansas_Map_Data)

Username:

Password:

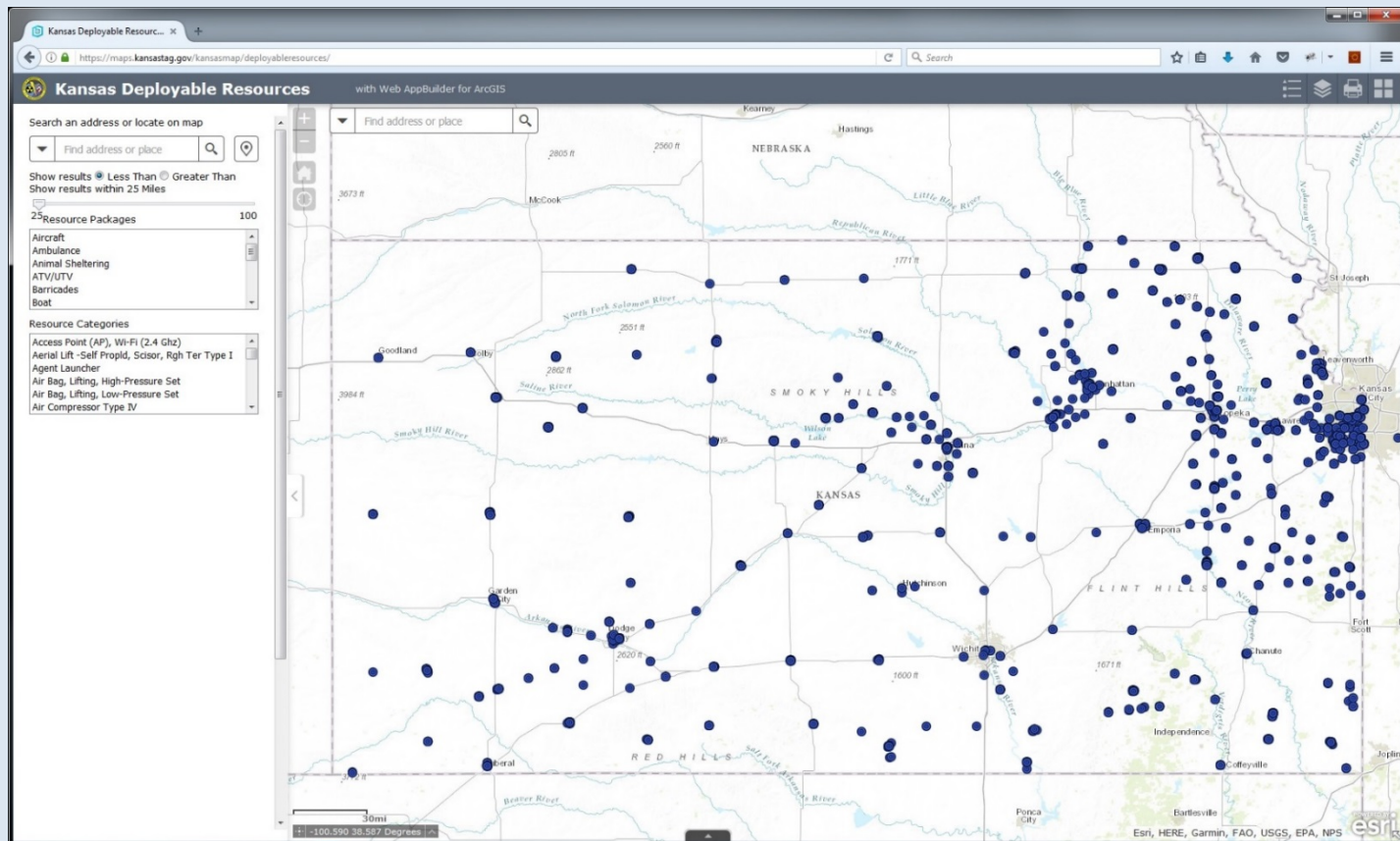
OK Cancel



"Building sustainable capabilities across all phases of Emergency Management in Kansas through selfless service"

Deployable Resources

Deployable resources are plotted onto the map and represented by blue circles

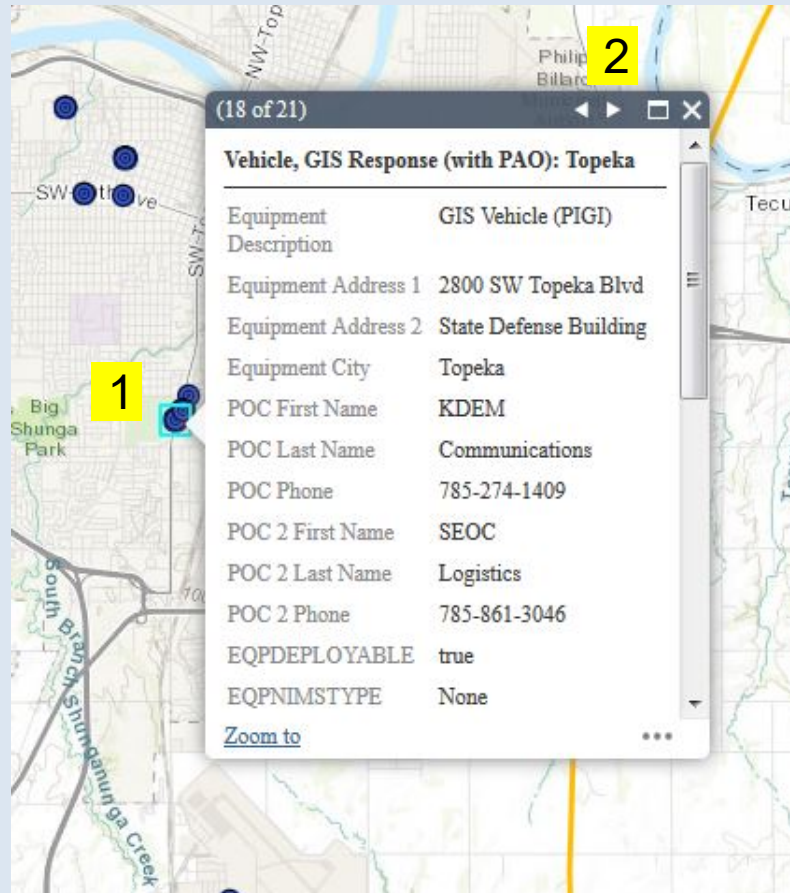


"Building sustainable capabilities across all phases of Emergency Management in Kansas through selfless service"



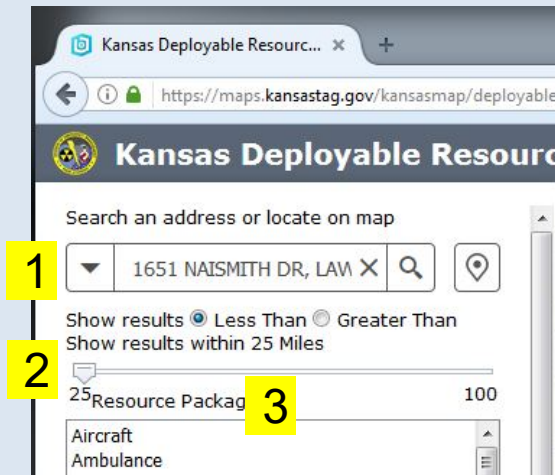
Get Resource Information

1. Click on a resource (blue circle) to view information about it.
2. If there are multiple resources at that location click the right/left arrows to browse through them.



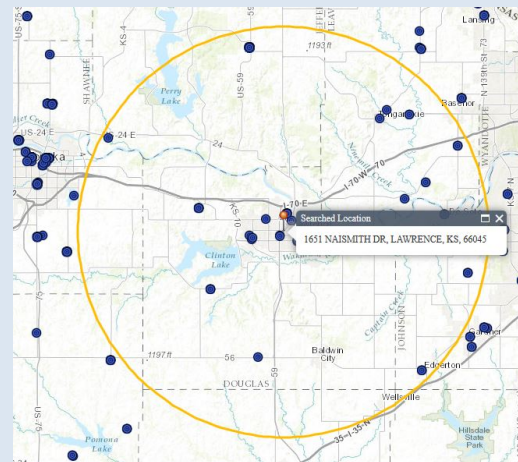
Set Incident Location

This widget is used to view information about features displayed on the map. Nearly all layers can be used with the identify button.



1. Set your incident location by searching for an address or click the map-point button and then click your location on the map
2. Select whether you want results less than or greater than your search distance
3. Click on the slider to select a search distance

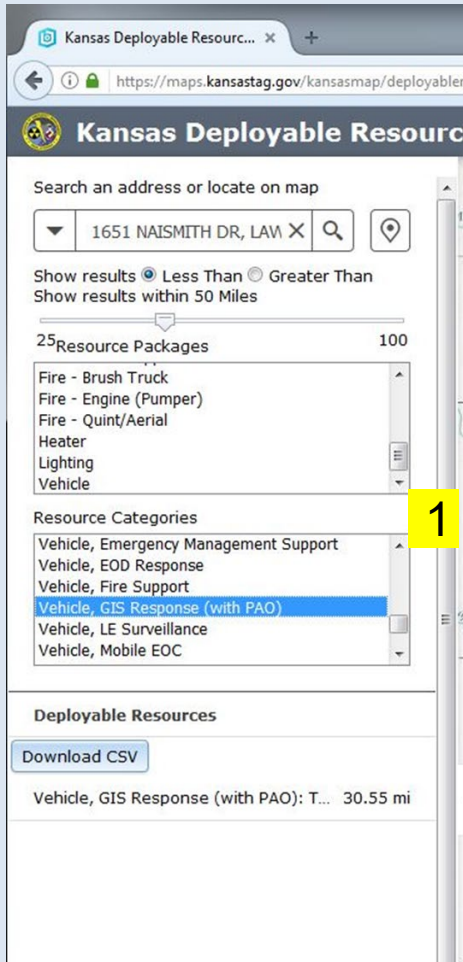
Note: The circle represents the distance you selected.



"Building sustainable capabilities across all phases of Emergency Management in Kansas through selfless service"

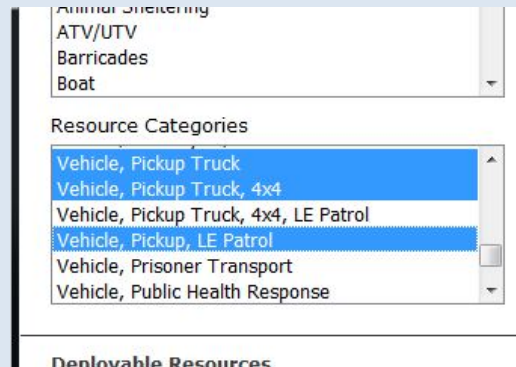


Select Categories and Search for Resources



1. Select a Resource Package (groups of similar categories) or Select a Resource Category to search

Note: You can hold down the CTRL key while you select categories or packages to select and search more than one.



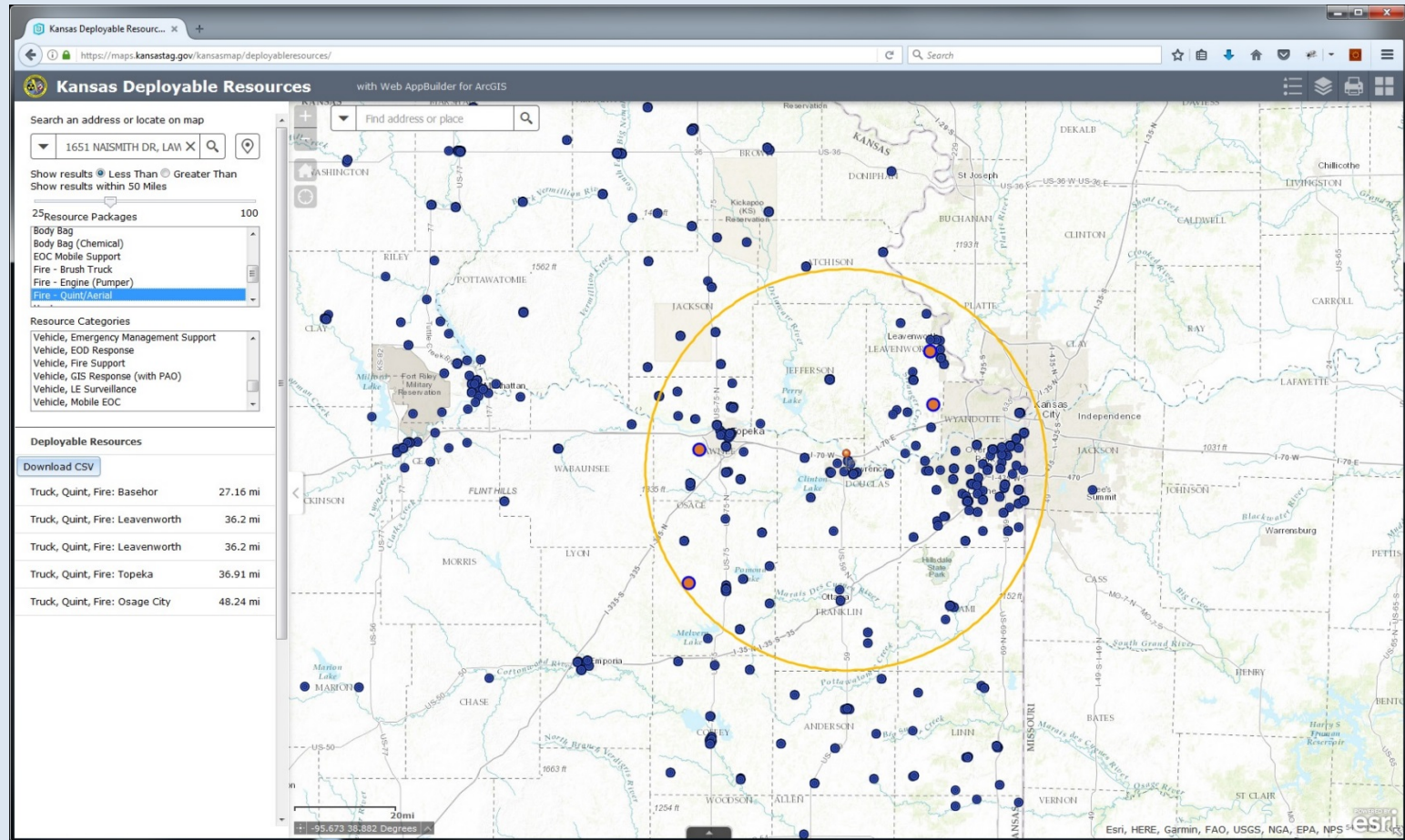
As you select categories the app will search and display matching resources



"Building sustainable capabilities across all phases of Emergency Management in Kansas through selfless service"

Matching Resources

Matching Resources are displayed on the map as red circles with blue outlines



"Building sustainable capabilities across all phases of Emergency Management in Kansas through selfless service"



View Resource Details

Kansas Deployable Resource

Resource Categories

- Vehicle, Emergency Management Support
- Vehicle, EOD Response
- Vehicle, Fire Support
- Vehicle, GIS Response (with PAO)
- Vehicle, LE Surveillance
- Vehicle, Mobile EOC

< Deployable Resources

Information

**Vehicle, GIS Response (with PAO):
Topeka**

Equipment Description	GIS Vehicle (PIGI)
Equipment Address 1	2800 SW Topeka Blvd
Equipment Address 2	State Defense Building
Equipment City	Topeka
POC First Name	KDEM
POC Last Name	Communications
POC Phone	785-274-1409
POC 2 First Name	SEOC
POC 2 Last Name	Logistics
POC 2 Phone	785-861-3046
EQPDEPLOYABLE	true
EQPNIMSType	None
Organization Address 1	2800 SW Topeka Blvd
Organization City	Topeka
Organization Name	KS Div of Emergency Mgmt
Organization Note	
Organization Phone 1	7852741409
Organization Phone 2	
Organization Fax	
Organization ID State	Kansas
EQPCAT	Vehicle, GIS Response (with PAO)
Equipment County	
Notes	

1. Click on a resource to view its details
2. Click the back arrow to go back to the resource list
3. Click the Download CSV button to save a copy of the found resources to your computer as a CSV file that can be opened in Excel

Kansas Deployable Resource

Search an address or locate on map

1651 NAISMITH DR, LAW X

Show results Less Than Greater Than

Show results within 50 Miles

25 Resource Packages 100

- Fire - Brush Truck
- Fire - Engine (Pumper)
- Fire - Quint/Aerial
- Heater
- Lighting
- Vehicle

Resource Categories

- Vehicle, Emergency Management Support
- Vehicle, EOD Response
- Vehicle, Fire Support
- Vehicle, GIS Response (with PAO)
- Vehicle, LE Surveillance
- Vehicle, Mobile EOC

Deployable Resources

Download CSV

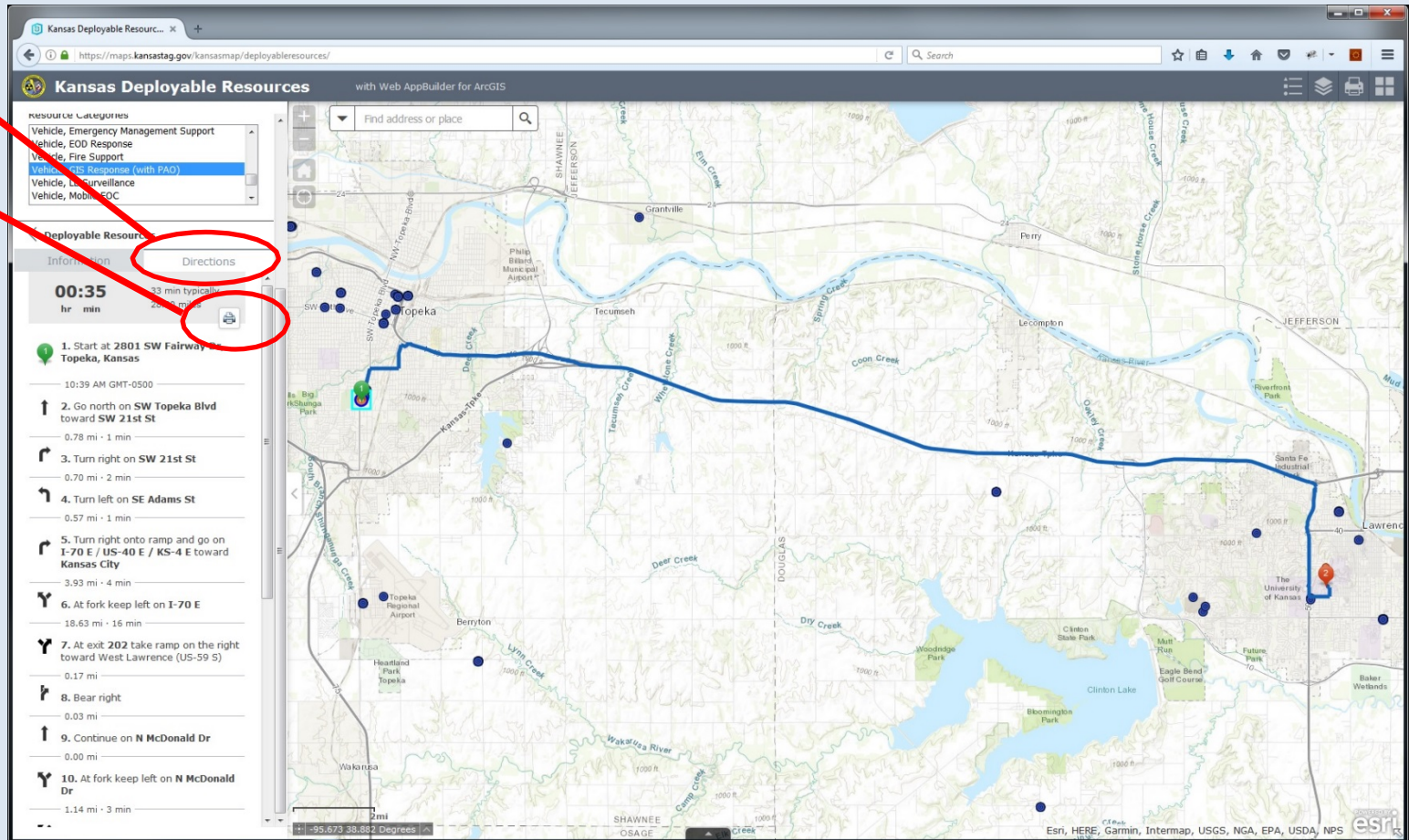
Vehicle, GIS Response (with PAO): T... 30.55 mi



Get Directions

Click the Directions tab to generate directions from the resource to the incident

Click the Print button to print the directions and map



"Building sustainable capabilities across all phases of Emergency Management in Kansas through selfless service"



Questions/Comments?



Michael D'Attilio

michael.g.dattilio.nfg@mail.mil

GIS Coordinator

Kansas Division of Emergency Management

Office: 785-646-2304

Cell: 785-207-5645

Brian Rogers

brian.m.rogers8.nfg@mail.mil

CRMCS Project Manager

Kansas Division of Emergency Management

Office: 785-646-

Cell: 785-207-5645

