

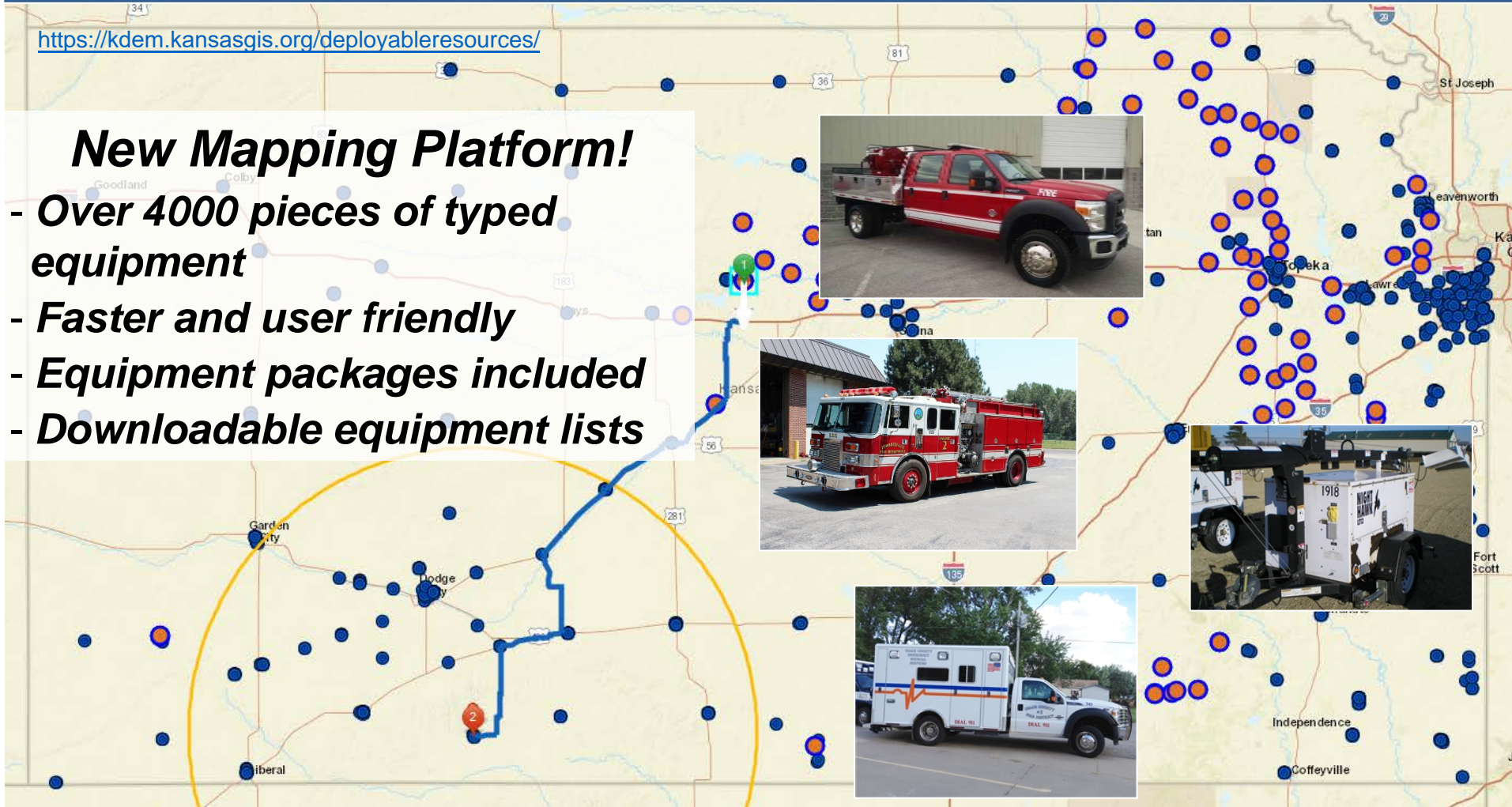


KansasMap: Deployable Resources

<https://kdem.kansasgis.org/deployableresources/>

New Mapping Platform!

- Over 4000 pieces of typed equipment
- Faster and user friendly
- Equipment packages included
- Downloadable equipment lists



KansasMap allows for easy identification and coordination of deployable equipment across the state of Kansas.

Any agency with the need to coordinate intrastate mutual aid may have access to the application.

Previous KansasMap login credentials are still valid, however if you need access please contact the Kansas Division of Emergency Management GIS Section:

Mike D'Attilio, GIS Coordinator: 785-646-2321, michael.g.dattilio.nfg@mail.mil
Luke Finley, GIS Analyst: 785-646-2322, luke.r.finley.nfg@mail.mil



Kansas
responders.us