



INSTALLATION GUIDE

COMMAND

PC-Based Software Installation Guide

Version 5.0

TABLE OF CONTENTS

- 1 ABOUT THIS GUIDE.....2
- 2 MINIMUM SYSTEM REQUIREMENTS2
- 3 INITIAL SETUP ON WINDOWS 10.....2
 - 3.1 Verifying System Requirements.....2
 - 3.2 Installing Internet Information Services..... 4
- 4 INITIAL SETUP ON WINDOWS 75
 - 4.1 Verifying System Requirements.....5
 - 4.2 Installing Internet Information Services.....6
- 5 OPENING COMMUNICATION PORTS THROUGH THE WINDOWS FIREWALL7
 - 5.1 Opening Port 80 for Data Transmissions7
 - 5.2 Opening Port 123 for the Time Server.....9
- 6 LOADING THE COMMAND SOFTWARE10
 - 6.1 From a DVD10
 - 6.2 From the Website 11
 - 6.3 Licensing the COMMAND Software..... 11
- 7 CONTACT US.....12

1 ABOUT THIS GUIDE

This installation guide provides the information needed to install Salamander COMMAND software. Depending on the resources of the computer the COMMAND software is installed on, the installation process is estimated to take between 45-60 minutes to complete.

2 MINIMUM SYSTEM REQUIREMENTS

COMMAND software installation requires the user to have Administrator rights to the computer. In addition, the computer must meet the following minimum system requirements:

Hardware/Software	Minimum System Requirements
Processor	1.4 GHz Intel Compatible
RAM (Memory)	2 GB
Screen Resolution	800x600
Hard Disk Free Space	8 GB
Operating System	Windows 7 Premium Service Pack 1
Internet Information Services	IIS 7.5

Table 2.1.1

3 INITIAL SETUP ON WINDOWS 10

These steps are used for new installations of Salamander PC Based COMMAND software on Windows 10 computers. If the software was previously installed and working on the PC, these steps are not necessary.

3.1 Verifying System Requirements

Step 1: Right-click **Start** → **System**.

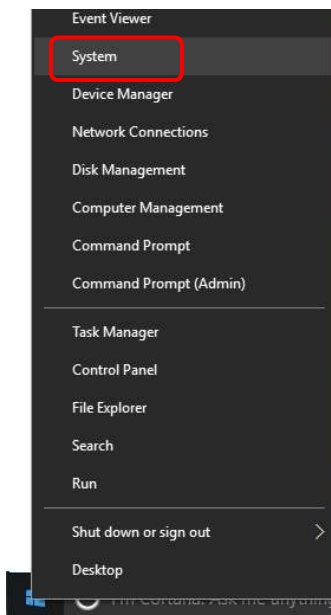


Figure 3.1.1

Step 2: Verify the computer's operating system, processor speed and RAM meet minimum requirements.

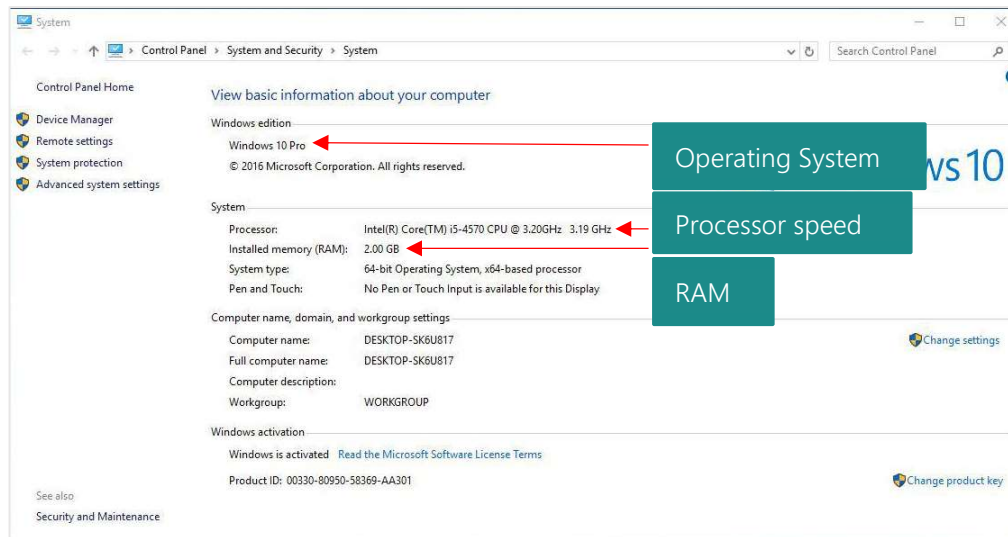


Figure 3.1.2

Step 3: To verify there is enough free space on the computer's hard disk to install COMMAND, right-click **Start** → **File Explorer** → **This PC**.

Step 4: Verify there is a minimum of 8 GBs of free space on the hard disk (typically the C: drive).

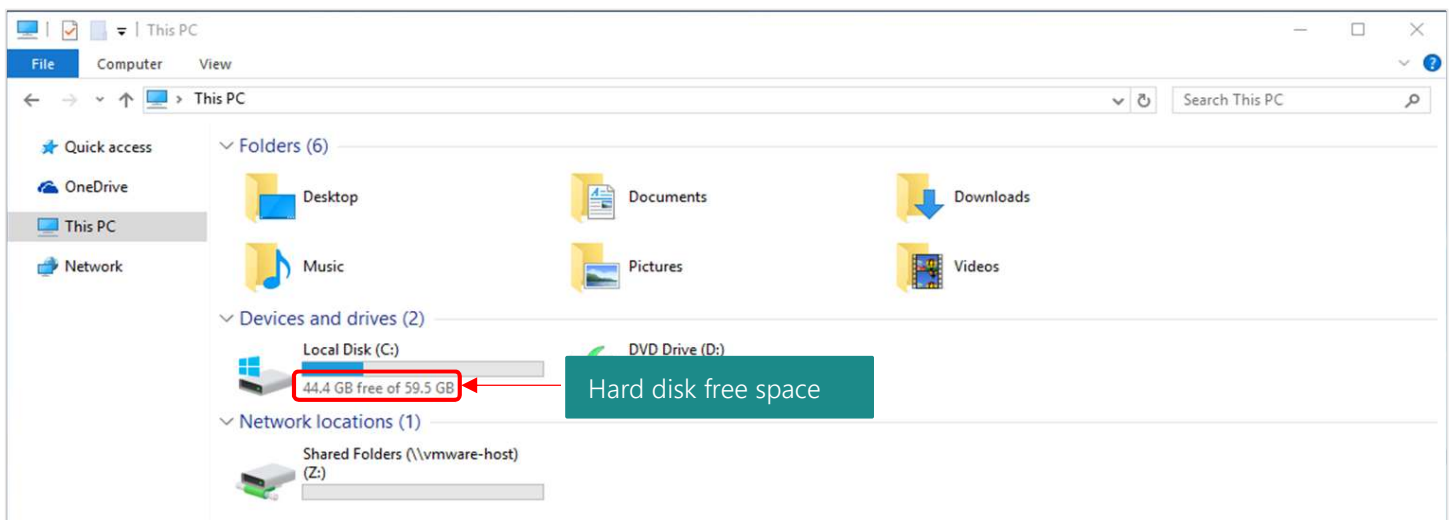


Figure 3.1.3

3.2 Installing Internet Information Services

Step 1: Right-click Start → Programs and Features.

Step 2: Click Turn Windows features on or off.

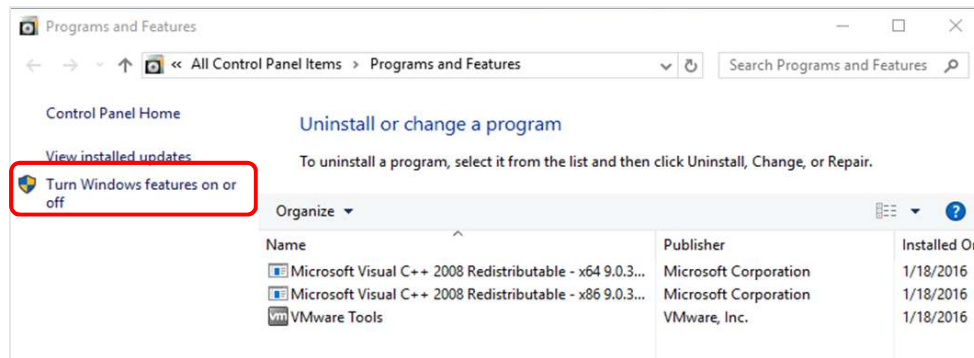


Figure 3.2.1

Step 3: The Windows Features screen appears. Expand .NET Framework 4.6 Advanced Services.

Step 4: Expand WCF Services.

Step 5: Check the boxes for HTTP Activation.

Step 6: Check the box for Internet Information Services.

Step 7: Expand the Internet Information Services folder.

Step 8: Expand the World Wide Web Services folder.

Step 9: Expand the Web Management Tools folder.

Step 10: Check the box for IIS Management Console.

Step 11: Expand the Application Development Features folder.

Step 12: Check the boxes for .NET Extensibility 3.5, .NET Extensibility 4.6, ASP.NET 3.5, ASP.NET 4.6, ISAPI Extensions and ISAPI Filters.

Step 13: Click OK.

Step 14: Exit the Programs and Features screen.

Step 15: You may get a message, "Windows needs files from Windows Update to finish installing some features". If so, choose "Download files from Windows Update".

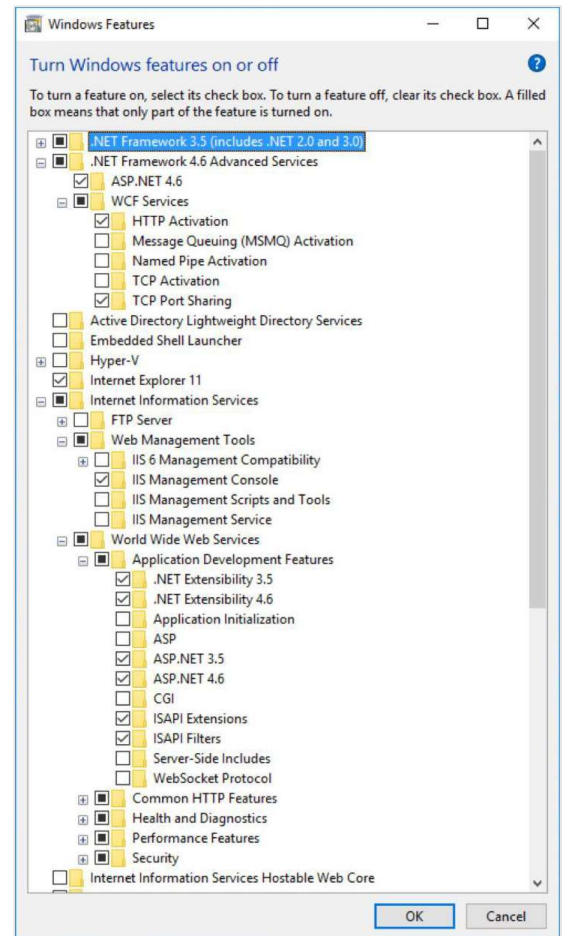


Figure 3.2.2

4 INITIAL SETUP ON WINDOWS 7

These steps are used for new installations of Salamander PC Based COMMAND software on *Windows 10* computers. If the software was previously installed and working on the PC, these steps are not necessary.

4.1 Verifying System Requirements

Step 1: Click **Start** → **Right-Click Computer** → **Properties**.

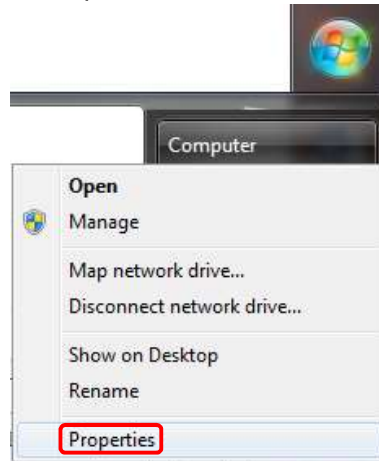


Figure 4.1.1

Step 2: Verify the computer's operating system, service pack, processor speed and RAM meet minimum requirements.

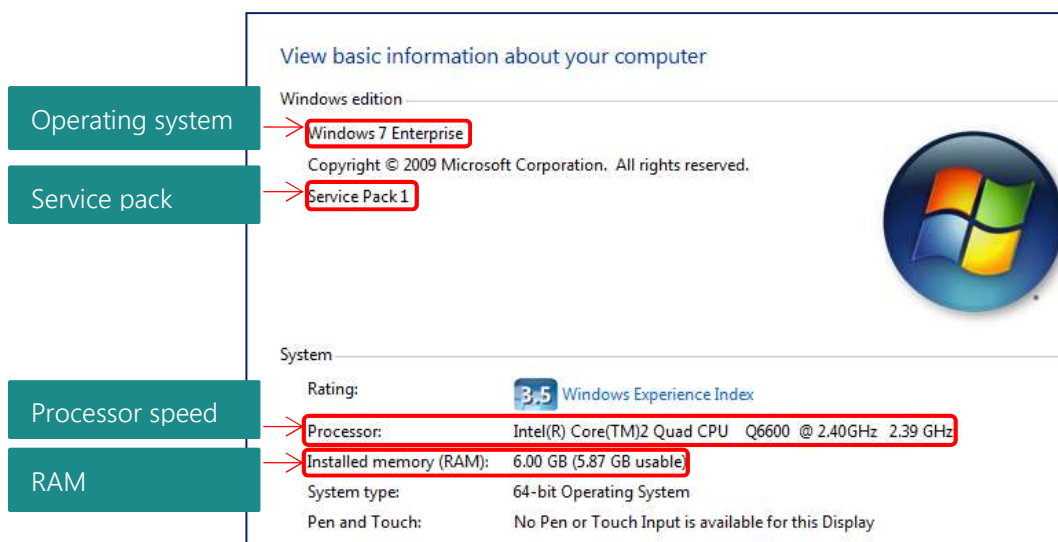


Figure 4.1.2

Step 3: To verify there is enough free space on the computer's hard disk to install COMMAND, click **Start** → **Left-Click Computer**.

Step 4: Verify there is a minimum of 8 GBs of free space on the hard disk (typically the C: drive).

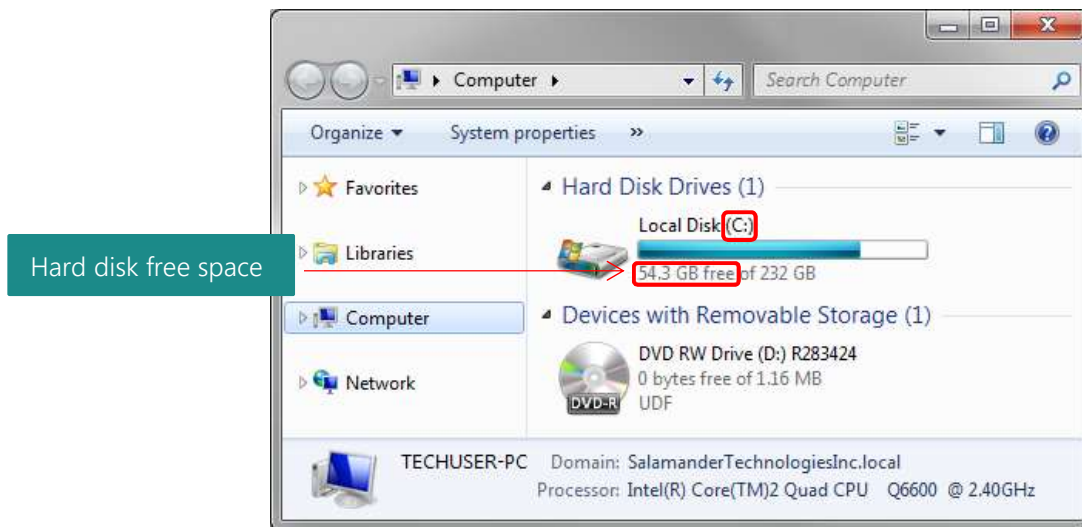


Figure 4.1.3

4.2 Installing Internet Information Services

Step 5: Click Start → Control Panel → Programs.

Step 6: Click Turn Windows features on or off.

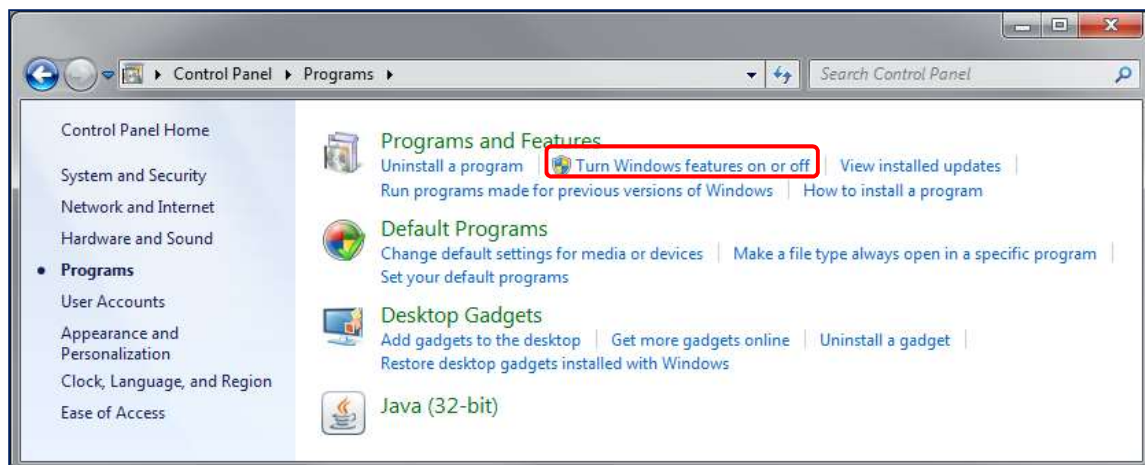


Figure 4.2.1

- Step 7:** The Windows Features box appears. Check the box for **Internet Information Services**.
- Step 8:** Expand the **Internet Information Services** folder.
- Step 9:** Expand the **Web Management Tools** folder. Check the box for **IIS Management Console**.
- Step 10:** Expand the **World Wide Web Services** folder.
- Step 11:** Expand the **Application Development Features** folder.
- Step 12:** Check the boxes for **.NET Extensibility**, **ASP.NET**, **ISAPI Extensions** and **ISAPI Filters**.
- Step 13:** Click **OK**. Wait while Windows makes changes to the features. This might take several minutes.
- Step 14:** Exit the Programs screen.

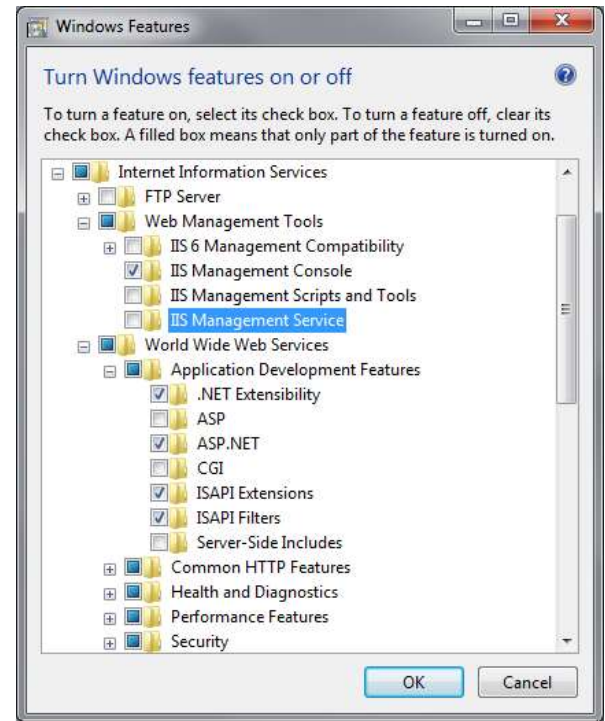


Figure 4.2.2

5 OPENING COMMUNICATION PORTS THROUGH THE WINDOWS FIREWALL

If you are syncing Salamander PC-based products with COMMAND, the COMMAND software must have access through Port 80 and Port 123 to function as a real-time Incident Command System application. If a third-party firewall utility is in use on the computer, consult your Information Technology Department for further assistance in opening communication ports.

To navigate to the Windows Firewall, click **Start** → **Control Panel** → **System and Security** → **Windows Firewall** → **Advanced Settings**. The Windows Firewall with Advanced Security screen will appear.

5.1 Opening Port 80 for Data Transmissions

A port must be opened in the Windows Firewall for the COMMAND software on the computer to receive data transmissions from other Salamander components (such as RAPID TAG and RAPID TAG EVAC).

Step 1: To open Port 80, click **Inbound Rules**.

Step 2: Click **New Rule**.

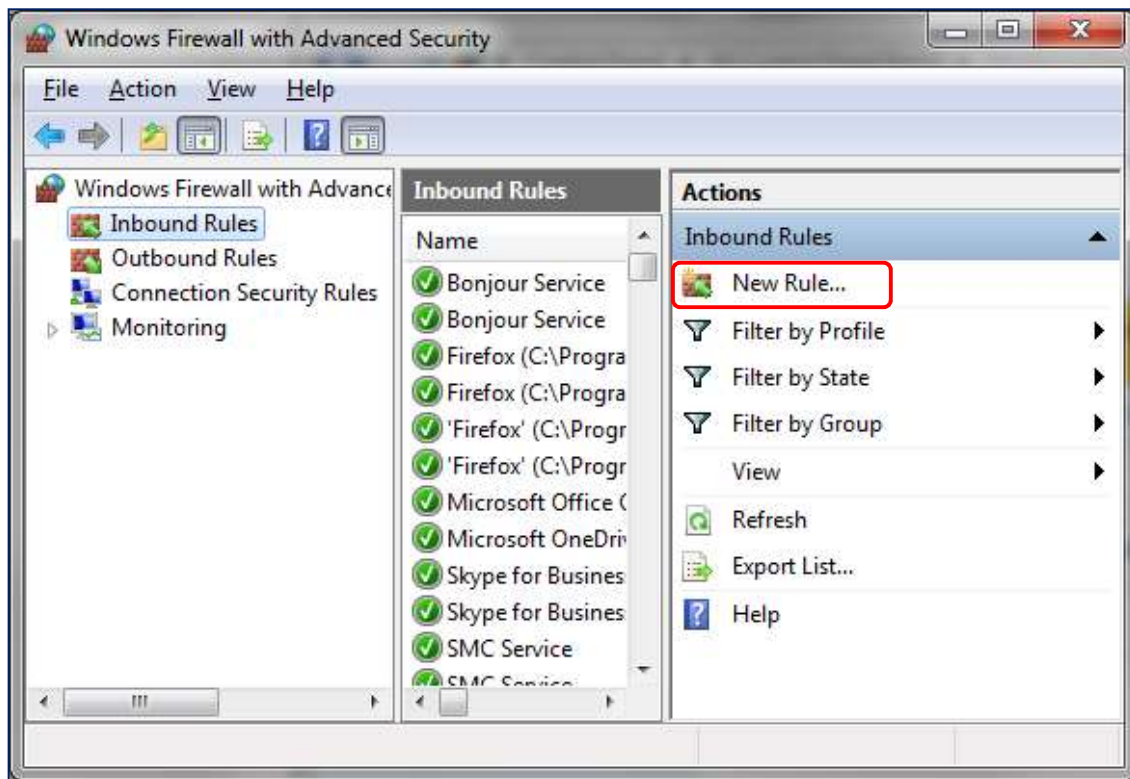


Figure 5.1.1

Step 3: The New Inbound Rule Wizard will appear. Select **Port** as the type of rule to create.

Step 4: Click **Next**.

Step 5: For the Protocols and Ports screen of the wizard, select **TCP**.

Step 6: Type in **80** in the **Specific local ports** box.

Step 7: Click **Next**.

Step 8: Select **Allow the connection**.

Step 9: Click **Next**.

Step 10: For the Profile screen of the wizard, check the boxes for **Domain**, **Private** and **Public**.

Step 11: Click **Next**.

Step 12: For the Name screen of the wizard, type in a name for the new rule. It is recommended that this rule be called, "STL Data".

Step 13: Click **Finish**.

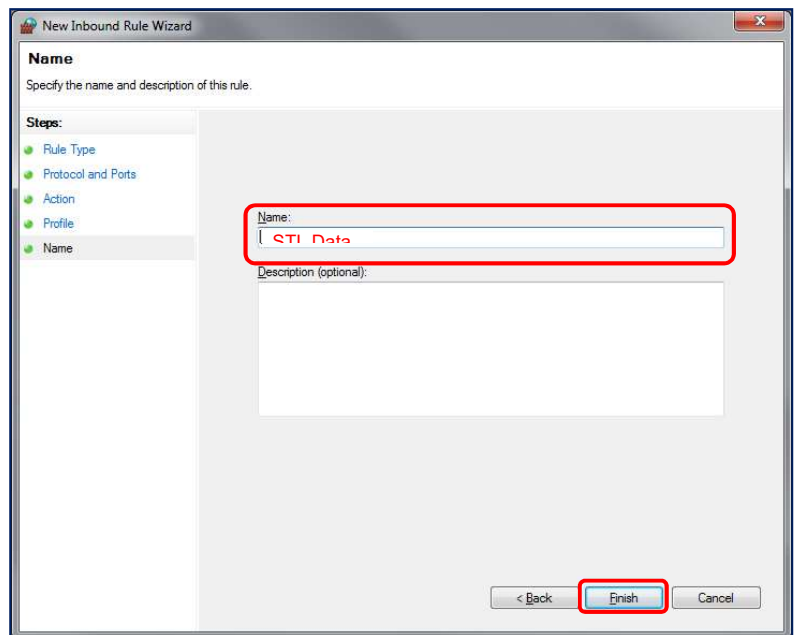


Figure 5.1.2

5.2 Opening Port 123 for the Time Server

A port must be opened in the Windows Firewall for the COMMAND software on the computer to receive time transmissions from the Time Server.

Step 1: To open Port 123, click **New Rule** on the Windows Firewall with Advanced Security window.

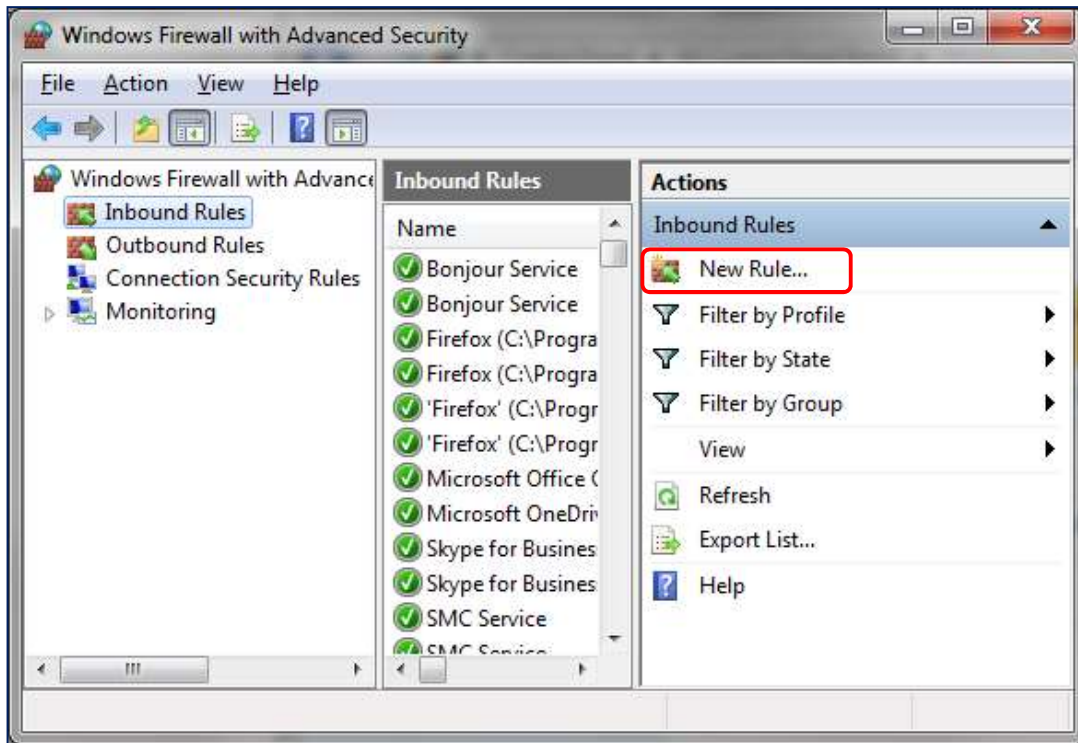


Figure 5.2.1

Step 2: The New Inbound Rule Wizard screen will appear again. Select **Port** as the type of rule to create.

Step 3: Click **Next**.

Step 4: For the Protocols and Ports screen of the wizard, this time select **UDP**.

Step 5: Type in 123 in the **Specific local ports** box.

Step 6: Click **Next**.

Step 7: Select **Allow the connection**.

Step 8: Click **Next**.

Step 9: For the Profile screen of the wizard, check the boxes for **Domain**, **Private** and **Public**.

Step 10: Click **Next**.

Step 11: For the Name screen of the wizard, type in a name for the new rule. It is recommended that this rule be called, "STL Time".

Step 12: Click **Finish**.

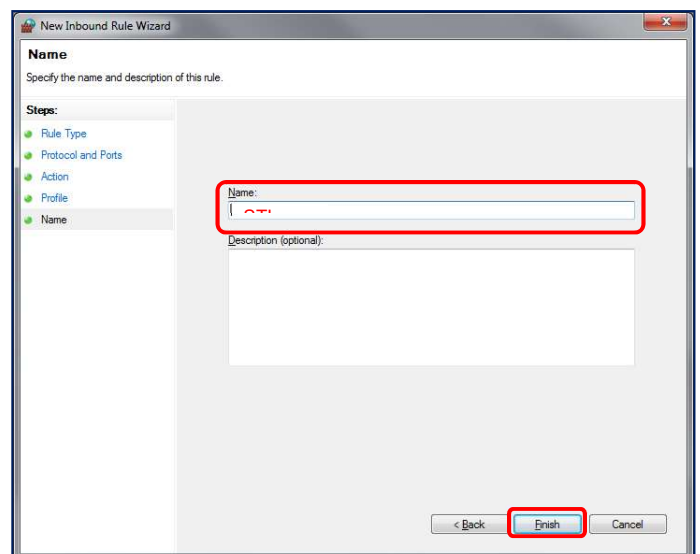


Figure 5.2.2

Step 13: Ports 80 and 123 are now opened for COMMAND communications. Now that the new rules have been created, verify the new inbound rules are in the **Inbound Rules** list.

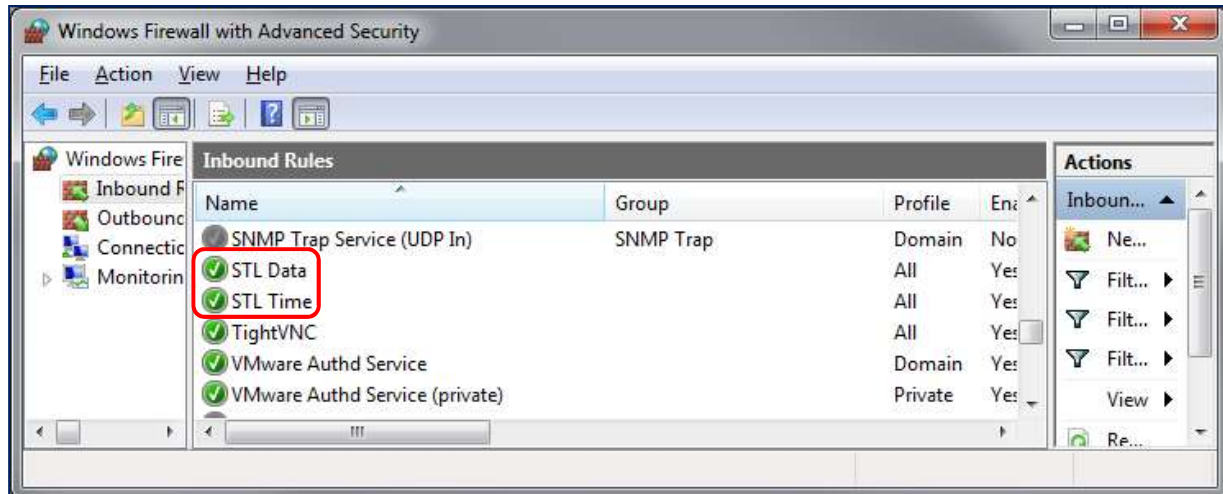


Figure 5.2.3

6 LOADING THE COMMAND SOFTWARE

6.1 From a DVD

Step 1: Insert the **Salamander Suite** DVD.

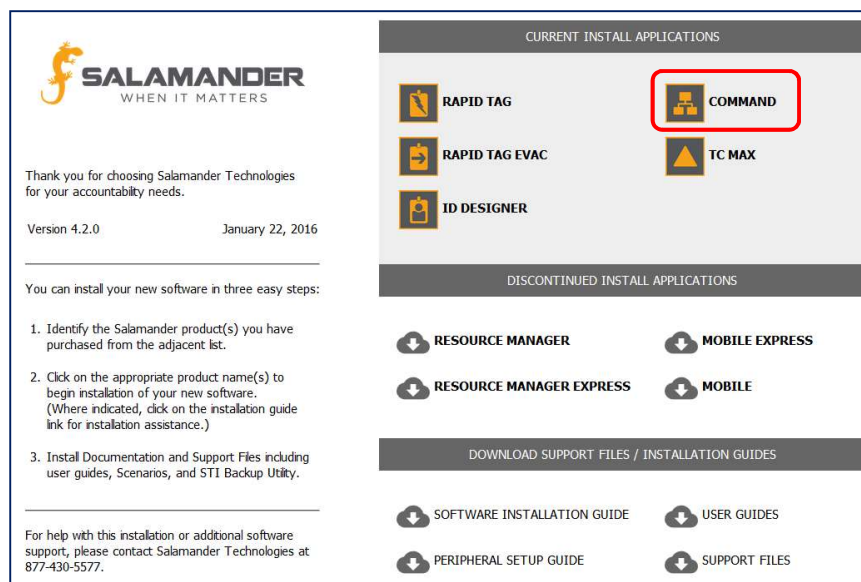


Figure 6.1.1

Step 2: Select **COMMAND**.

Step 3: When prompted, choose to run the file and confirm any security warnings.

NOTE: The COMMAND installation will include SQL Server and Microsoft Visual Studio Report Viewer.

Step 4: Follow the prompts in the Salamander Setup Wizard.

Step 5: Click **Next** to finish the installation.

Some additional resources available are the **User Guides** and **Support Files**. The **Support Files** contain the manufacturer user guides for Salamander-sold peripherals as well as corresponding stand-alone driver and service pack installs.

6.2 From the Website

Step 1: Click the download link in the COMMAND order confirmation email or go to www.salamanderlive.com → **NEED HELP?** → **Resources**. The Resources web page will appear.

Step 2: Select **Install COMMAND**.

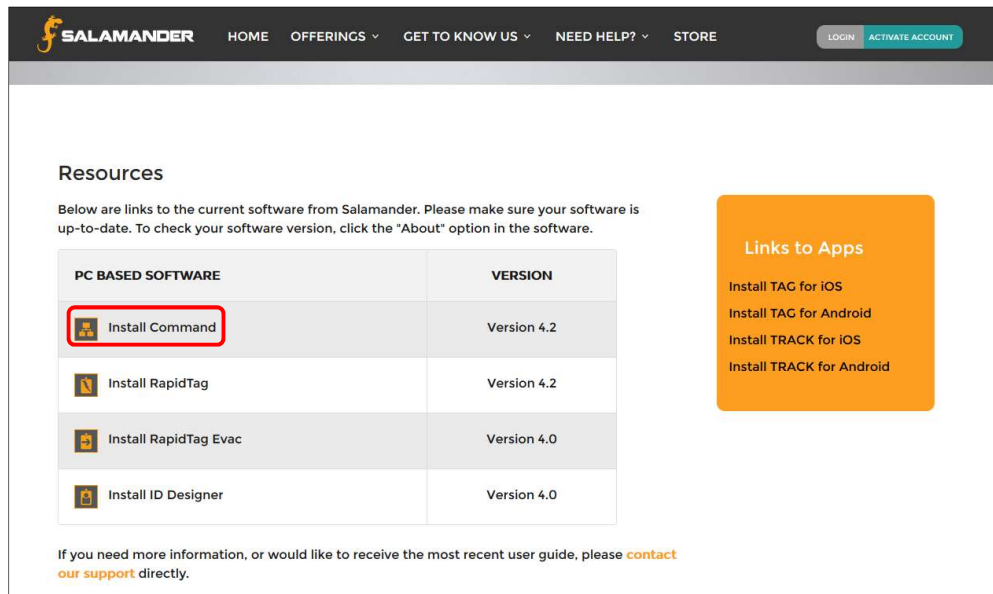


Figure 6.2.1

Step 3: Depending on the internet browser, a prompt may appear asking to run or download the command.exe file. If this occurs, choose to download the file. If no prompt is presented, the browser has automatically download the file. This might take up to 30 minutes to download.

Step 4: Once the command.exe is downloaded, navigate to the download location (typically the **Download** folder).

Step 5: When prompted, choose to run the file and confirm any security warnings.

NOTE: The COMMAND installation will include SQL Server and Microsoft Visual Studio Report Viewer.

Step 6: Follow the prompts in the Salamander Setup Wizard.


Step 7: Click **Next** to finish the installation.

6.3 Licensing the COMMAND Software

Below is an example of the Salamander Product Information Report that was received with the order of the COMMAND software. This report contains the Application Keys for the COMMAND software.

--- Software Products ---							
Product	Part #	Ver	Application Key	Serial #	Parser	SMA Exp	
rapidTAG	IT-RT	4.0	1dbfb670-1ed1-4373-9911-82c046e72380	00117761	Yes	5/1/2014	
resourceMGR	IT-RM	4.0	dfb4347c-7326-438d-8c9d-f103c7d8af59	00117762		5/1/2014	
ID Designer	IT-DESIGN	4.0	32169d5d-3a18-4f12-866a-abd7bbaffd33	00117763		5/1/2014	
Command	IT-COM	4.0	d9bdb146-df7b-4bec-a00b-156e43612446	00117764		5/1/2014	

Figure 6.3.1

Step 1: To license the COMMAND software, double click on the **COMMAND Icon** . The License Activation screen will appear.

Step 2: Enter the COMMAND Application Key into the **License Key** field.

Step 3: Click **OK** (or **Save**) and the COMMAND software installation process is complete.

7 CONTACT US

877.430.5171

training@salamanderlive.com

www.salamanderlive.com